

Air motor

Please read operation manual thoroughly before putting the motor into operation and comply with it during operation

Motor and accessories are not to be used for purposes other than intended.

For reasons of product liability and operating safety, all modifications of the motor and/or accessories are to be approved by the producer's responsible technician.

No liability is assumed for damages caused by non-observance of the operation manual or improper repair as well as by use of non-original spare parts.

Changes suiting technological progress reserved.

When operating in explosive surrounding, all filters or sound insulating devices are to be mounted at the motor's air outlets.

Before adjusting or setting, the motor must be disconnected from the compressed-air line.

Protect your hands, hair and clothing from being grasped by rotating parts.

Apply suitable filters or sound absorbers to reduce the noise emission. Recommended sound absorbers are available from the manufacturer on demand.

The motor is designed for operating pressures of 6-7 bar. Do not operate the device with higher pressures than specified for your model. If higher pressures are required, however, it is essential to get release by the manufacturer.

Damages might occur when operating the device with higher operation speeds than advised.

Length of compressed-air line max. 3 meters. At excess length mind the resulting pressure drop. Take care of clean and dry compressed air. Compressed air must comply with at least quality class 4 according to ISO 8573-1.

Operation with oiled air:

Residual oil content $mg/m^3 = 5$

Residual dust particle size $\mu m = 15$

Residual dust concentration max. $mg/m^3 = 8$

Residual water pressure dew point temperature $C^\circ = + 3$

Residual water concentration max. $g/m^3 = 6$

Maintenance unit should be affixed to the motor as close as possible.

Adjust amount of oil supply to 2-3 drops per minute (1 drop = 15 mm).

We recommend the use of an oil-fog lubricator respectively a maintenance unit.

Lubricating oil:

Use resin- and acid-free oil according to viscosity class HL 32.

When employing nutritional oil, use oil according to USDA-H1, viscosity class 32.

Take care for the correct inner diameter of the compressed-air line. For this purpose refer to technical data of the motor.

Motor type series:

4 mm LW with: RD-R-200 u. RD-U-130

6 mm LW with: RD-R-300, RD-U-180, RD-R-320, RD-U-190, RD-R-420, RD-U-250, LRD-R-300, LRD-U-180, LRD-R-320, LRD-U-190, VRD-R-300, VRD-U-180, VRD-R-320, VRD-U-190

10 mm LW with: RD-R-550, RD-U-400, RD-R-580, RD-U-410, RD-R-770, RD-U-560, LRD-R-550, LRD-U-400, LRD-R-580, LRD-U-410, VRD-R-550, VRD-U-400, VRD-R-580, VRD-U-410

13 mm LW with: RD-R-1000, RD-U-800, RD-R-810, RD-U-650, LRD-R-1000, LRD-U-800, LRD-R-810, LRD-U-650, VRD-R-1000, VRD-U-800, VRD-R-810, VRD-U-650

Before connecting the motor, blow through the compressed-air line to remove potential dust particles. Check the compressed air in respect of water content. Water, corrosion etc. in the mains causes rust inside the motor and therefore high abrasion respectively breakdown of the motor.

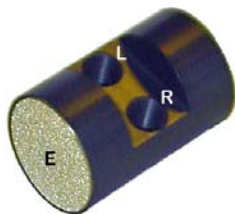
Air connection types:

Standard – lateral

Air inlet: R = right-hand motion

Air inlet: L = left-hand motion

Air outlet E = exhaust



Standard – back



Special air inlet

Inlet: 1/8 inch right-hand thread

Outlet: 3/8 inch right-hand thread



Non-reversible motor:

Connect compressed-air line to inlet. The direction of the rotation (standard motor) is, in case of a right-hand motion motor (Connector R) clockwise, seen from the back. If extracted air should be issued, connect a line instead of the screw-in sound absorber to the outlet.

All models with standard air connectors are equipped with a third connector jack which, however, is without any function and may be closed with a dummy plug without compromising the efficiency of the motor.

Air motor

Reversible motor:

Connect compressed-air line to inlet for the desired direction of the rotation. The connector not used must not be covered with a dummy plug, as it additionally issues extracted air. In case noise reduction is wanted, attach a sound absorber which may be obtained from the manufacturer.

To maintain the guarantee and to achieve a lasting durability, maintenance after 12 months or after 500 hours of operation is recommended. In case of extreme operating conditions the maintenance period should be shortened. We recommend maintenance by a service technician of the manufacturer's.

If maintenance is self-executed, all planetary gears, needle bearings and sealings must be lubricated with appropriate grease.

Grease:

Multi-purpose lubricant for rolling bearings, sliding bearings and gears, resin- and acid-free

NLGI class: 2

Type of saponification: lithium

Dropping point: 185° C

Worked penetration: 265 – 295

Please dispose lubricating and cleaning materials ecologically consciously.

After self-executed maintenance check proper operation of the motor. To do so, apply 2-3 drops of oil into the air inlet and run the motor a few seconds in no-load operation.

Do not bash the shaft or elements attached to the shaft with a hammer. Handle all rotating parts with utmost care.

Oil-free operation:

Note that no long lasting operation of the vanes is given when operating with absolutely dry (oil-free) compressed air.

Warning:

The vanes of the motor contain PTFE. Obey the general health and security advice for handling these materials. Avoid open flame to prevent inflammation/smoke by set-free particles of the vanes. Smoke of PTFE particles might possibly cause allergic reactions. Avoid long-time idle running, as the motor may be damaged by that. Damages resulting from abrasion, overcharge, improper handling or disregard of the operation manual are excluded from guarantee.

Claims can only be accepted when the device is sent to the manufacturer in undismantled condition.

Additional attention for motors operating in areas of category 2 G zone 1 and 2 for gas:

Temperature of surrounding max. 60° C

Temperature of compressed air must range between +10° C and 40° C max.

Motors are permitted for inside use only. All metal parts attached to the motor must have mechanical connection.

Data concerning engine torque / power / speed of the motor in question to be taken from the technical datasheet. Maintenance periods all 11 months respectively 500 hours of operation.

Reuss guarantee:

Reuss guarantees for a period of 12 months from the date of purchase from Reuss or an authorised representative or licensed dealer that the finished Reuss products when installed correctly and under normal circumstances are free from material or manufacturing defects. To claim benefits within this guarantee, the purchaser has to inform Reuss or an authorised service centre immediately in writing (by no means later than 14 days after detection of the defect). Agreements differing from that have to be explicitly in writing, signed by both contractors or fixed in writing within a Reuss quotation. Freight charges to and from Reuss are on buyer's account at any rate. Furthermore excluded from the Reuss guarantee are goods or parts that have been used for purposes other than intended, that have not been maintained, that have been treated carelessly or that suffered an accident or transport damage.

This explicit guarantee excludes all other guarantees or assurances that have been given assertively in literature, data or by persons. Within this exclusive remedy, the maximum liability of Reuss should never exceed the value of the respective product, and Reuss reserves the right to refund the purchase price instead of repair or replacement.

Reuss is not liable or responsible for consequential damages of any kind. This is not limited to the use of a product and includes among other things the loss of time, caused problems, the loss of profit, labour costs and other charges or consequential damages to persons, enterprises or properties, no matter whether for reasons of guarantee violation, carelessness or other reasons.

The customer is responsible for checking the suitability of the Reuss products for application or resale by the customer or for installation of the devices or applications designed, mounted, or produced by the customer.

Company:

H.W. Reuss

Westring 44

63691 Ranstadt – Dauernheim

Germany

Tel.: +49 6035 920473

Fax. +49 6035 920474

Email: h.w.reuss@t-online.de

Website: www.druckluftmotoren-reuss.de